

Dedicated to People Flow™



A SOLUTION FOR MAKING ALL PREMISES ACCESSIBLE

KONE Motala™ 2000



The KONE Motala™ 2000 platform lift suits the architecture of any building, thanks to the wide range of car and shaft design options.



This safe, reliable and easy-to-use solution ensures freedom of movement for families with baby strollers and elderly people.



The compact platform lift, with self-supporting construction, can be installed in a stairwell without major structural alterations.



The KONE Motala 2000 platform lift is an eco-efficient solution. It has an oil-free drive system and uses 50% less electricity than a standard elevator.

Improved accessibility in residential buildings and public premises

An elevator in a multi-story building is a convenience for anyone, but for many people it is a necessity. Elderly people, people with disabilities, and parents with children in strollers may find it difficult or impossible to climb stairs.

In many two- or three-story buildings, such as private homes, small apartment buildings or public buildings such as libraries, a full-size elevator is not a practical solution. It would cost too much and take up too much space.

The KONE Motala™ 2000 platform lift is specifically designed for these requirements. It can quickly and easily be installed and requires a small amount of space. It enables elderly people to live in their own homes longer and it ensures that public buildings and business owners meet their requirement to provide equal access for all.

Safe and easy to use

The heart of the KONE Motala 2000 platform lift is a patented guided chain drive system. The chain is enclosed in a track along its entire length, so it can never derail. The inverter drive ensures smooth starting and stopping. Thanks to the large “hold to run” push-buttons, the KONE Motala 2000 is easy to use.

Eco-efficient

Thanks to its low power consumption, small fuse requirements, and low maintenance needs, the KONE Motala 2000 is economical to use. This solution uses 50% less energy than a standard elevator. With LED lights and automatic switching off of internal lighting when the elevator is not in use, consumption is reduced still further. The low power consumption, 0.55 kW instead of the conventional 1.1 kW, enables the use of a 10A fuse instead of 16A, minimizing operating costs.

During installation, the gearing mechanism is greased for lifetime use. So there are no messy oil leaks, no need to change the oil, and no waste oil to dispose of.

Quick to install

Due to its small space requirements, with no machine room, the KONE Motala 2000 is quick and easy to install. The elevator can usually be installed in a two-story building in just a few days.

Key benefits

- Very space-efficient: most platform space for shaft dimensions
- Easy and safe to use
- Self-supporting construction, no machine room
- Fast installation
- Extremely reliable, high-quality construction
- Low power consumption
- Voice communication with 24-hour KONE Customer Service Center
- Quiet and comfortable
- Several design options to suit any building

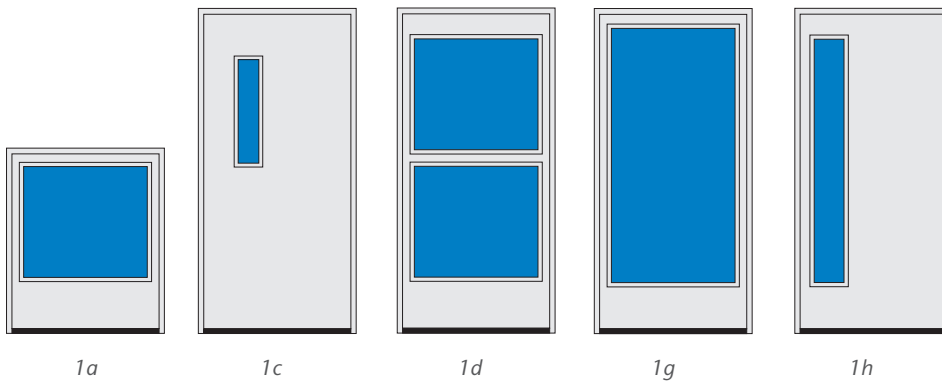


The KONE Motala 2000 can quickly and easily be installed to improve mobility in small apartment buildings or public buildings such as libraries or health clinics.

Aesthetic solutions for any building

Every building is different, and so is every KONE Motala™ 2000 platform lift. The Motala 2000 shaft can be glazed on all sides in order to let light in and to give the lift a more open character. There are several door choices, including fire-rated doors. For the elevator car, several ceiling and flooring options are available.

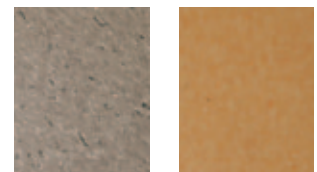
Doors



- Full or half height (2000 or 1300 mm on top floor)
- Swing door (900 x 2000 mm)
- Manual door with door closer or automatic door opener (optional)
- Doors can be fitted on 3 sides
- Right- or left-hand opening
- Doors options 1d and 1h are available as certified fire doors (EI30). Door 1c is available as fire door (EI60)

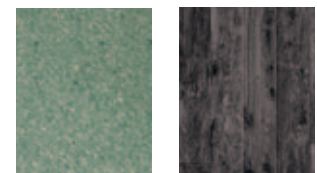
Floors

Vinyl floors



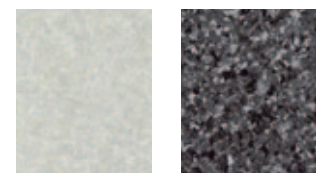
Grey
(18383)

Yellow
(18772)



Green
(18780)

Dark Oak
(11522)



Light Granite
(3116561)

Dark Granite
(3116568)

Platforms



Standard



Exclusive Oak



Exclusive Steel



Classic Oak
(11542)

Cherry
(11492)

Rubber floors



Grey Coin
Pattern
(SC009)

Black Coin
Pattern
(SC001)

Other options

- Factory paintwork, RAL colors
- Glazed shaft
- Automatic swing doors
- Folding chair
- Handrail
- Braille signalization
- Remote control
- Electrical emergency lowering
- Audible announcements (voice synthesizer)
- Extra wide doors (1000 mm)
- Landing floor buttons away from the platform lift for easier use by people in wheelchairs
- Stainless steel or wooden door handle
- KONE Motala Exclusive interior materials

Shaft

The shaft glazing is available with several different shades.



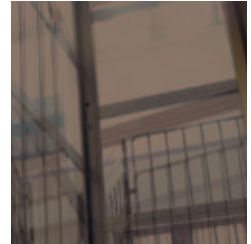
Ocean 1



Ocean 2



Bronze 1



Bronze 2



Smoke 1



Smoke 2



Frosted 1



Frosted 2



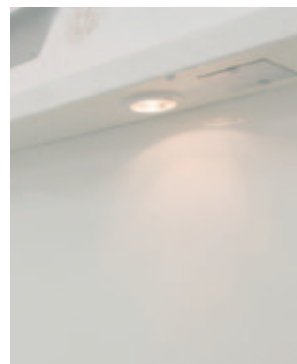
Clear

Control Panel



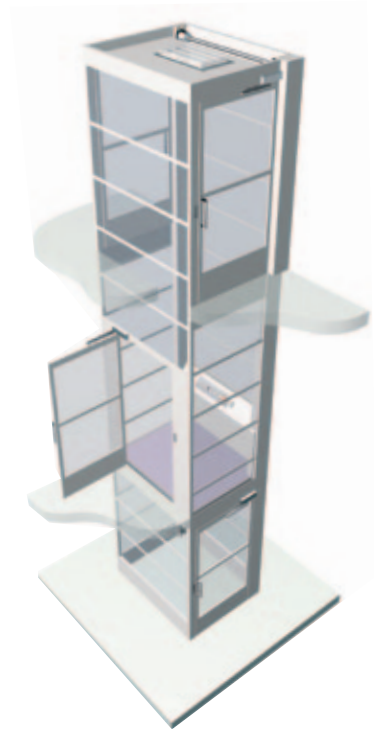
- Large easy-to-use buttons (50 x 50 mm)
- Hold to run
- Emergency stop button

Lighting



- LED lights in ceiling
- Emergency LED lighting

Key features and dimensions

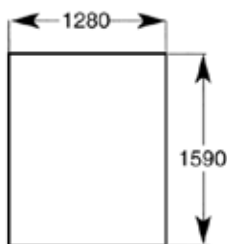


Dimensions

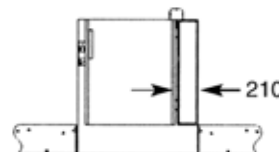
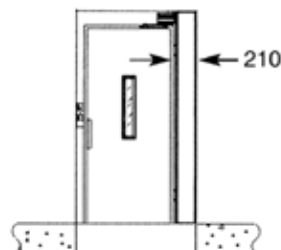
	Motala 2000 Home	Motala 2000	Motala 2000 XL
Shaft size (mm)	1150 x 950	1150 x 1560	1150 x 1760
Platform size (mm)	1020 x 870	1020 x 1480	1020 x 1680
Shaft size (mm)	1250 x 950	1250 x 1560	1250 x 1760
Platform size (mm)	1120 x 870	1120 x 1480	1120 x 1680
Shaft size (mm)	1350 x 950	1350 x 1560	1350 x 1760
Platform size (mm)	1220 x 870	1220 x 1480	1220 x 1680

Motala 2000 Home for private homes, Motala 2000 for public buildings, Motala 2000 XL with extra large platform.

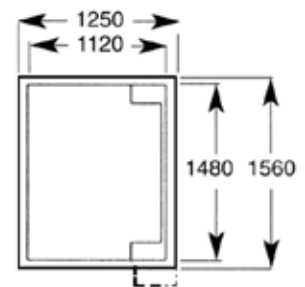
Shaft installation space



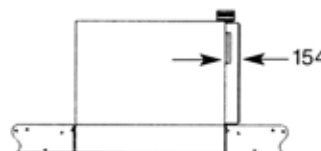
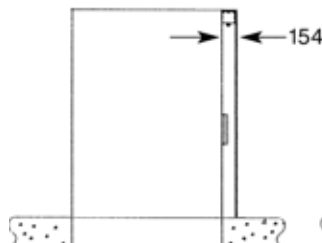
Service panel in frame



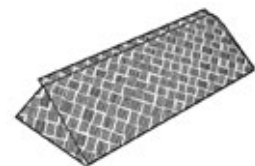
Shaft and platform dimensions



The dimensions in these pictures are for the shaft size 1250 x 1560.



Ramp



Specifications

- Travel: max 13 m
- Speed: 0.15 m/s
- Stops: 2 - 6
- Pit: 60 mm depth, alternatively a ramp
- Rated load: 500 kg (400 kg for Motala 2000 Home)
- Headroom: 2230 mm
- Supply voltage: 230-240 V / 10 A
- Drive system: 0.55 kW enclosed geared motor. Lifecycle greased gear.
- Shaft: Self-supporting enclosure. No need for conventional shaft.
- Platform: L-shaped platform with safety edge
- Emergency lowering: Manual or electric emergency lowering to lowest level
- Alarm: Battery-powered, automatically recharging alarm system. Emergency buzzer. Optionally, two-way voice connection to 24h KONE Customer Care Center with KONE Voice Link™.
- Certificate: 66750-2009-CE-OSL-DNV
- Fulfills European Union Machinery Directive 2006/42/EC and European Harmonized Standard EN81-41





KONE provides innovative and eco-efficient solutions for elevators, escalators and automatic building doors. We support our customers every step of the way; from design, manufacturing and installation to maintenance and modernization. KONE is a global leader in helping our customers manage the smooth flow of people and goods throughout their buildings.

Our commitment to customers is present in all KONE solutions. This makes us a reliable partner throughout the life-cycle of the building. We challenge the conventional wisdom of the industry. We are fast, flexible, and we have a well-deserved reputation as a technology leader, with such innovations as KONE MonoSpace®, KONE MaxiSpace™, and KONE InnoTrack™. You can experience these innovations in architectural landmarks such as the Trump Tower in Chicago, the 30 St Mary Axe building in London, the Schiphol Airport in Amsterdam and the Beijing National Grand Theatre in China.

KONE employs over 33,800 dedicated experts to serve you globally and locally in over 50 countries.

KONE Corporation
www.kone.com